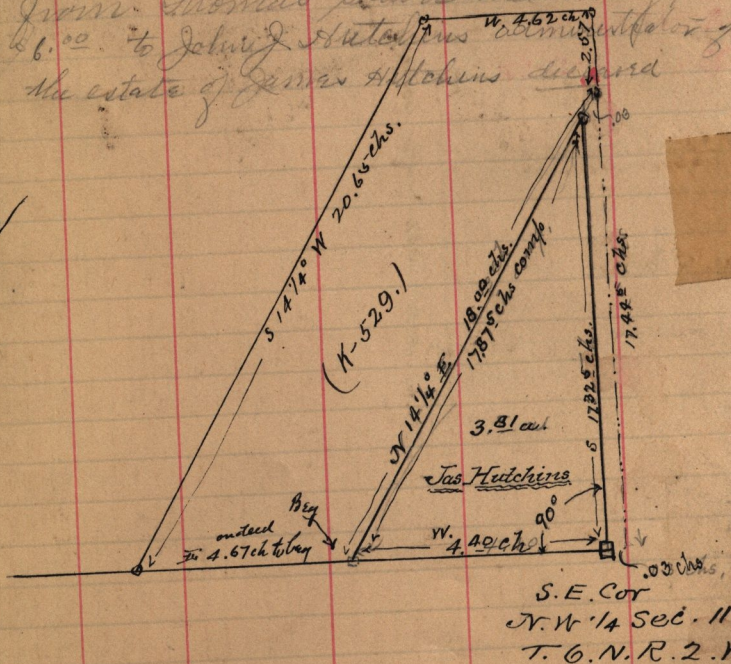


Feb. 22 - 1893 -

K-529, Deed from Thomas Slater to Richard Howell - Oct 20 - 1877 -

P<sup>4</sup> N. W. 1/4 Sec. 11. T<sup>6</sup> N. R. 2. W. Beg.  
4.40 chs. W. of S. E. cor. of sd. 1/4 Sec. thence N 14 1/4  
18. chs. N. 2. 57 chs. W. 4.62 chs. S 14 1/4° W 20.65 chs  
E 4.67 chs to beg. 9.26 ac

makes out a deed for the piece above  
this on the East. to Ellen M. Hutchins  
from Thomas Slater and Mary pl  
6.00 to John Hutchins administrator  
of the estate of James Hutchins deceased



Oct 11-1893. sold mar. 7

✓

✓

→